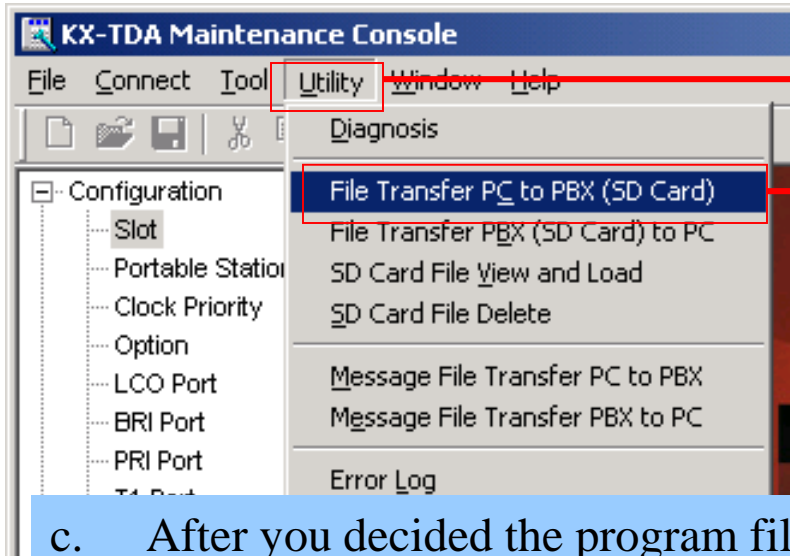


Program File Load (PC Programming)

Operation1: Program File Transfer

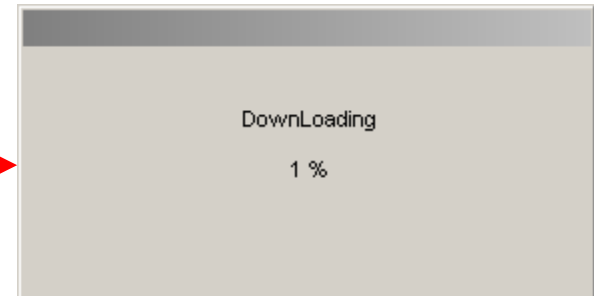
You must prepare the program file on your HDD beforehand.



a. Select “Utility”

b. Select “File Transfer PC to PBX”
Then file select dialogue box appears, you can select target program file.

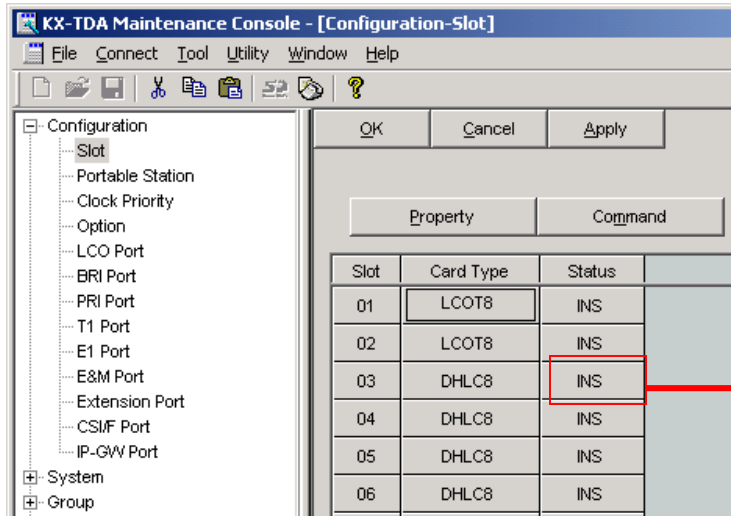
c. After you decided the program file, this dialogue box appears.
Program file transfer takes a few minutes by USB.
When transfer finished, “completed” message appears, and program file name is registered automatically into the memory.
(See Operation3)



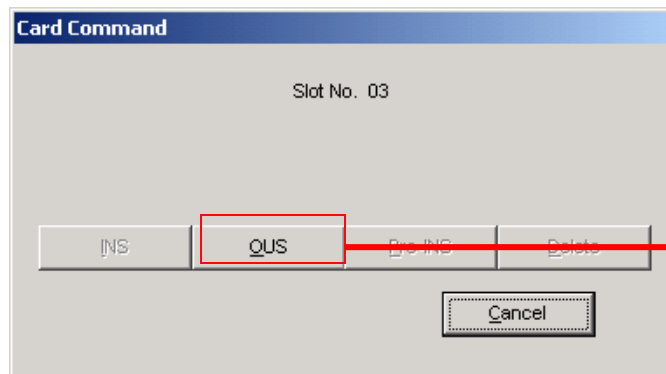
Program File Load (PC Programming)

Operation2: Card status change to out of service

Program file load is available only for out of service status card. Open “Configuration-SLOT” screen and change the status.



a. Click status cell of target card. Then, Command dialogue box appears.

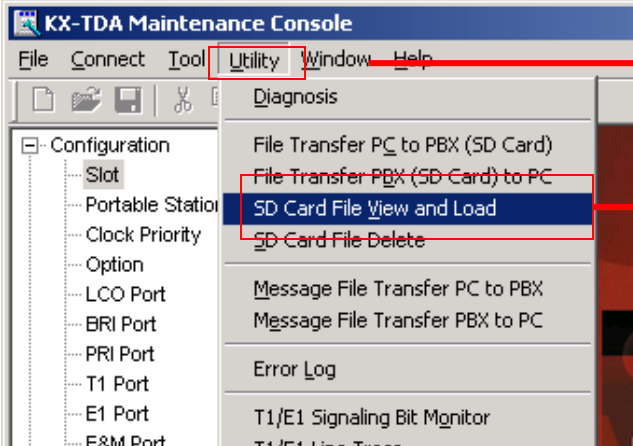


b. Click “OUS” button for change the status.

Program File Load (PC Programming)

Operation3: Program File View and Load (1/4)

It shows the file which is available for download.



a. Select “Utility”

b. Select “SD Card File View and Load”
Then following screen appears.

c. This screen gives an information as kind of files that the memory card has.
The first character of the program file is “P”.
For example, PDHLC is DHLC/DLC card’s program.

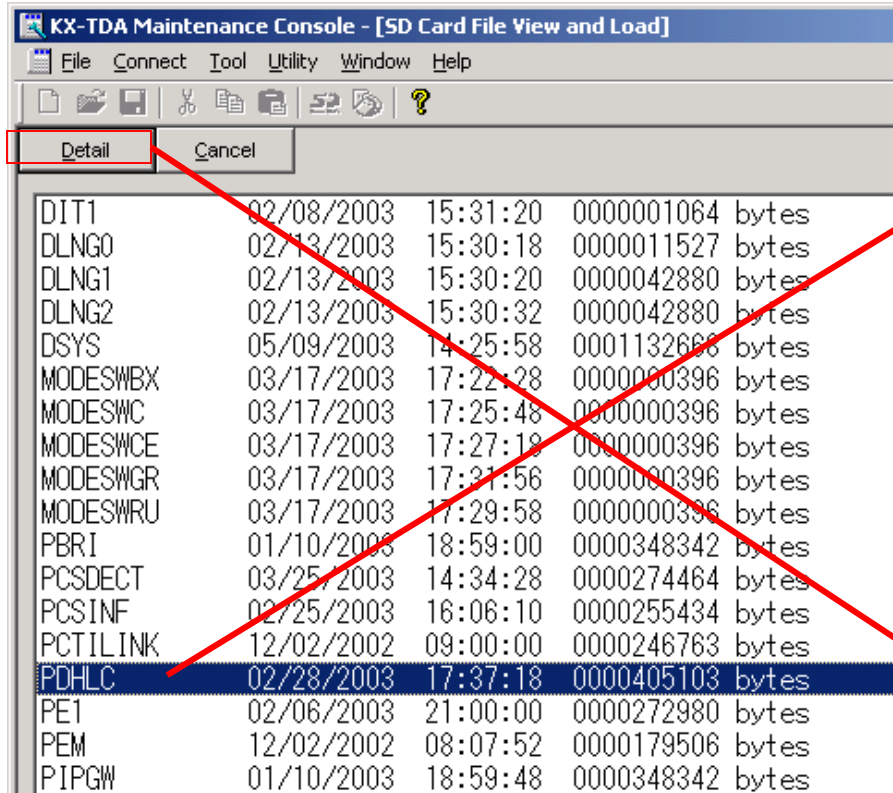
The screenshot shows the 'SD Card File View and Load' dialog box with a list of files. The file 'PDHLC' is highlighted with a blue background and circled in red. A red arrow points from the text in block 'c' to this file.

File Name	Date	Time	Size	Unit
DIT1	02/08/2003	15:31:20	0000001064	bytes
DLNG0	02/13/2003	15:30:18	0000011527	bytes
DLNG1	02/13/2003	15:30:20	0000042880	bytes
DLNG2	02/13/2003	15:30:32	0000042880	bytes
DSYS	05/09/2003	14:25:58	0001132668	bytes
MODESWBX	03/17/2003	17:22:28	0000000396	bytes
MODESWC	03/17/2003	17:25:48	0000000396	bytes
MODESWCE	03/17/2003	17:27:18	0000000396	bytes
MODESWGR	03/17/2003	17:31:56	0000000396	bytes
MODESWRU	03/17/2003	17:29:58	0000000396	bytes
PBRI	01/10/2003	18:59:00	0000348342	bytes
PCSDECT	03/25/2003	14:34:28	0000274464	bytes
PCSINF	02/25/2003	16:06:10	0000255434	bytes
PCTILINK	12/02/2002	09:00:00	0000246763	bytes
PDHLC	02/28/2003	17:37:18	0000405103	bytes
PET	02/06/2003	21:00:00	0000272980	bytes
PEM	12/02/2002	08:07:52	0000179506	bytes
PIPGW	01/10/2003	18:59:48	0000348342	bytes
PMPR	03/26/2003	16:35:26	0005723512	bytes
POPB3	02/28/2003	13:12:28	0000245774	bytes
PPRI23	01/10/2003	19:35:32	0000332960	bytes
PPRI30	01/10/2003	19:43:40	0000337974	bytes
PSI C	02/28/2003	17:45:08	0000157412	bytes

Program File Load (PC Programming)

Operation3: Program File View and Load (2/4)

You must select target program file from the memory.



Program File	Date	Time	Size (bytes)
DIT1	02/08/2003	15:31:20	000001064 bytes
DLNG0	02/13/2003	15:30:18	0000011527 bytes
DLNG1	02/13/2003	15:30:20	0000042880 bytes
DLNG2	02/13/2003	15:30:32	0000042880 bytes
DSYS	05/09/2003	14:25:58	0001132800 bytes
MODESWBX	03/17/2003	17:22:28	0000000396 bytes
MODESWC	03/17/2003	17:25:48	0000000396 bytes
MODESWCE	03/17/2003	17:27:19	0000000396 bytes
MODESWGR	03/17/2003	17:31:56	0000000396 bytes
MODESWRU	03/17/2003	17:29:58	0000000396 bytes
PBRI	01/10/2003	18:59:00	0000348342 bytes
PCSDECT	03/25/2003	14:34:28	0000274464 bytes
PCSINF	02/25/2003	16:06:10	0000255434 bytes
PCTILINK	12/02/2002	09:00:00	0000246763 bytes
PDHLC	02/28/2003	17:37:18	0000405103 bytes
PE1	02/06/2003	21:00:00	0000272980 bytes
PEM	12/02/2002	08:07:52	0000179506 bytes
PIPGW	01/10/2003	18:59:48	0000348342 bytes

d. Select target program file.

PDHLC : DHLC / DLC
PSLC : SLC
PT1 : T1
PE1 : E1
PBRI : BRI
PPRI23 : PRI23
PPRI30 : PRI30
PEM : E&M
PIPGW : IP-GW
PCTILINK : CTI-LINK
PCSINF : CSINF
POPB3 : OPB3

e. Click the Button.

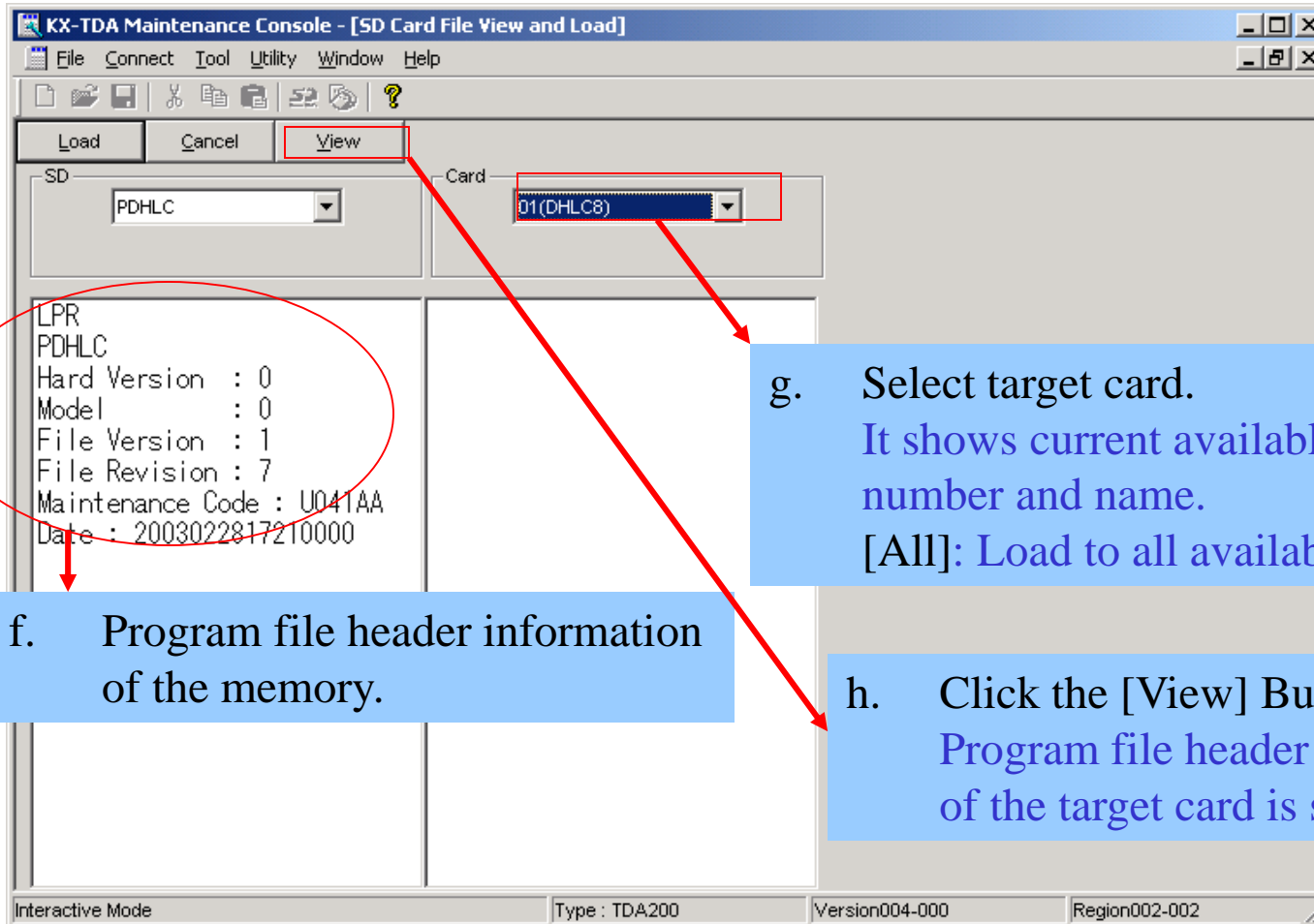
[Detail]: When you load the card program, click this button. Then program file details is shown. Except for program file, this button is invalid.

[Cancel]: Close this screen.

Program File Load (PC Programming)

Operation3: Program File View and Load (3/4)

It shows program file header information.



g. Select target card.
It shows current available card number and name.
[All]: Load to all available card.

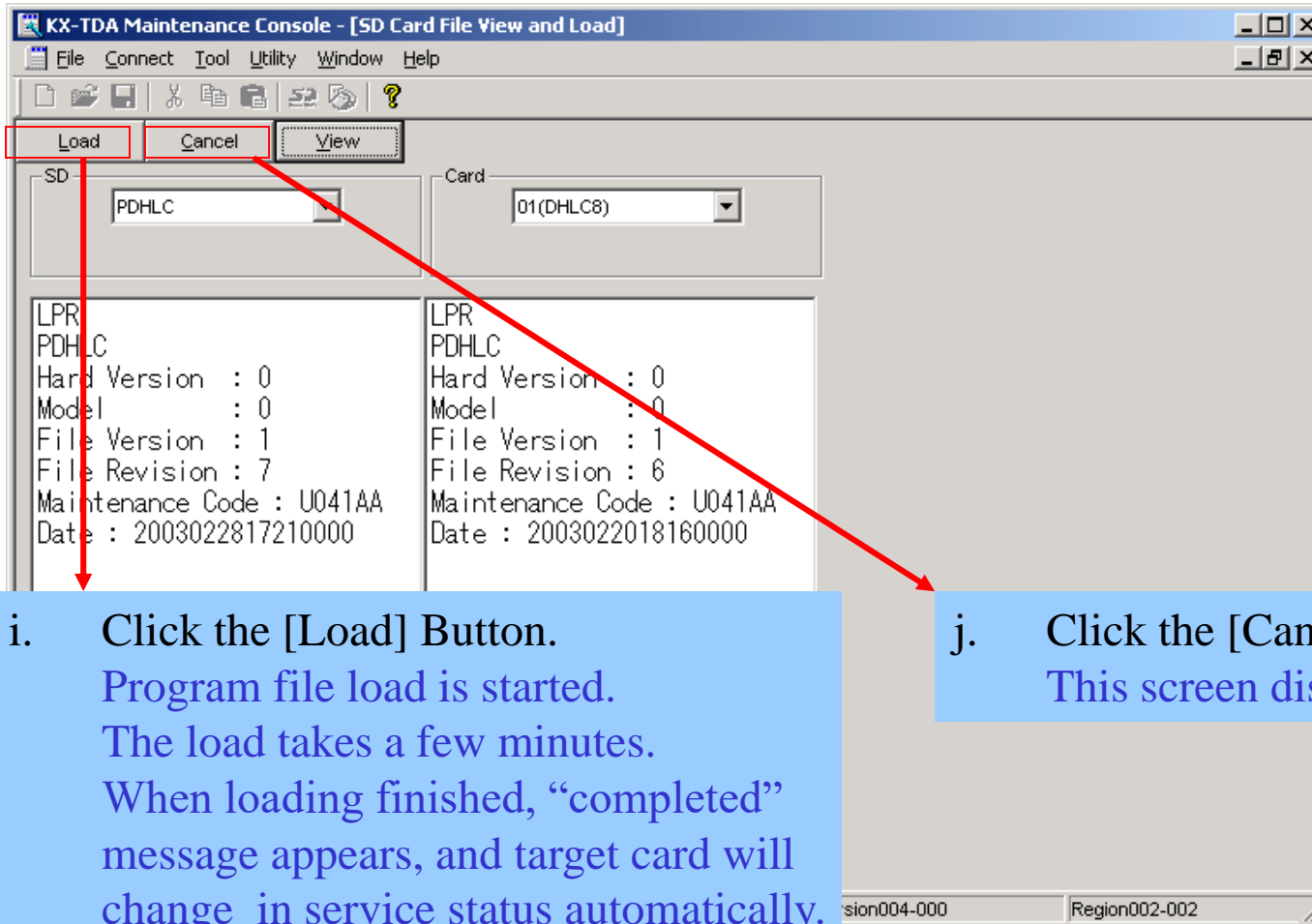
f. Program file header information of the memory.

h. Click the [View] Button.
Program file header information of the target card is shown.

Program File Load (PC Programming)

Operation3: Program File View and Load (4/4)

You should compare header information of card and memory.



- i. Click the [Load] Button.
Program file load is started.
The load takes a few minutes.
When loading finished, “completed” message appears, and target card will change in service status automatically.

- j. Click the [Cancel] Button.
This screen disappears.